



CHINA

Social Indicators

Population (Million):	1,386.395
Population Growth Rate (%/Year):	0.559
GDP (Billion USD):	12,237.700
GDP per Capita (USD):	8,827
Gross Savings (Billion USD):	5,752.389
Life Expectancy (Years):	76.25
GINI Index:	46.5
Human Development Index:	0.752

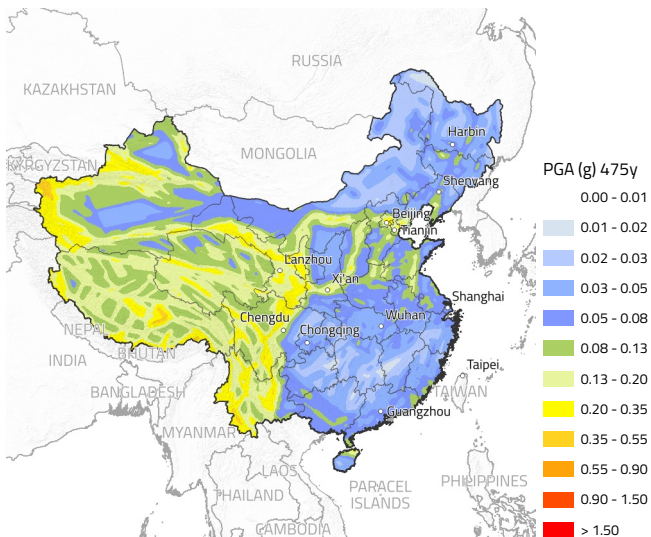
Risk Indicators

Occupancy	Asset Replacement Cost (Billion USD)	Average Annual Loss (Million USD)	Average Annual Loss Ratio (%)
Residential	17,531.0	2,239.6	0.13
Commercial	2,302.0	291.7	0.13
Industrial	1,052.1	139.5	0.13

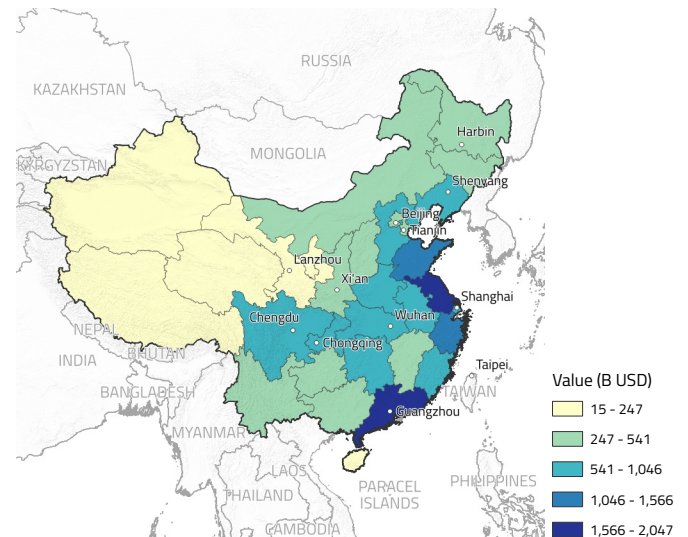
Major Earthquakes

2008 M 7.9 - Sichuan Province	87,652 fatalities
1976 M 7.5 - Tangshan	242,769 fatalities
1974 M 7.1 - Yunnan and Sichuan	20,000 fatalities

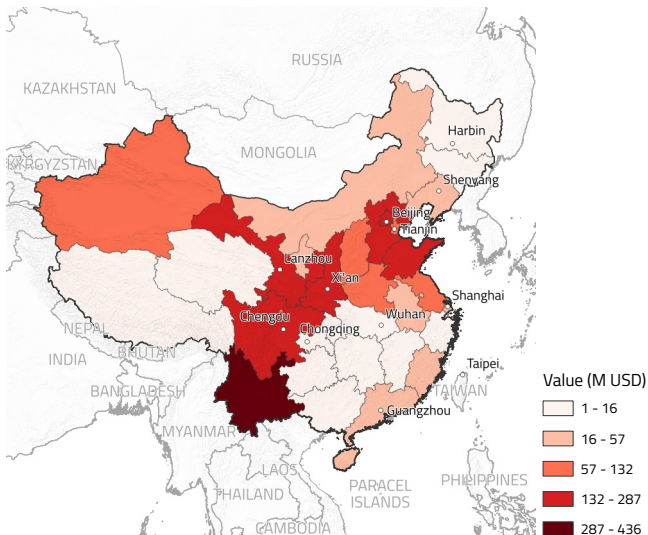
Seismic Hazard



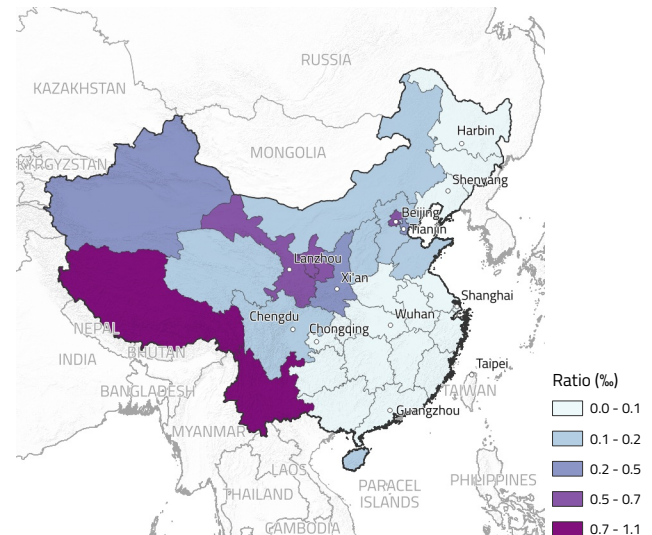
Exposure



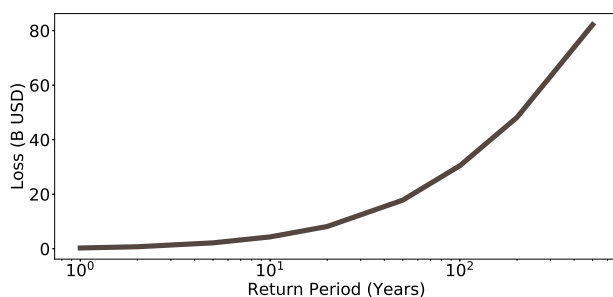
Average Annual Losses



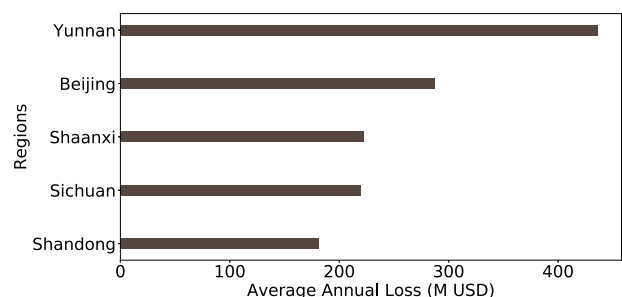
Average Annual Loss Ratios



Loss Exceedance Curve



Regions of Highest Earthquake Risk



- The primary source for the social Indicators was the World Bank database (<https://data.worldbank.org>). If no data was available for a country from the World Bank database, the International Monetary Fund (IMF) database (<https://data.imf.org>), the United Nations (UN) databases (<http://www.un.org/en/databases>) and The CIA World Factbook 2016-17 (<https://www.cia.gov/library/publications/the-world-factbook>) published by the US Central Intelligence Agency were used.
- The social indicators listed in the country profiles are for the year 2017 in most cases. For indicators where data for 2017 was not available for a country, data from the most recent year where the indicator is available is presented in the country profile. In future releases of the country profiles, the year associated with each indicator will be included explicitly.
- The seismic hazard map depicts the geographic distribution of the Peak Ground Acceleration (PGA) with a 10% probability of being exceeded in 50 years, computed for reference rock conditions (shear wave velocity, V_{s30} , of 760-800 m/s). The seismic hazard maps displayed in the country profiles are based on the Global Earthquake Model (GEM) Global Seismic Hazard Map (version 2018.1), clipped to the country boundary. The Global Seismic Hazard Map was created by collating maps computed using national and regional probabilistic seismic hazard models developed by various institutions and projects, and by GEM Foundation scientists.
- The average annual loss represents the long-term mean loss value per year due to direct damage caused by earthquake ground shaking in the residential, commercial and industrial building stock, considering structural and non-structural components and building contents.
- The average annual loss ratio for the country (or subdivision) represents the average annual loss normalized by the total asset replacement cost within the country (or subdivision).
- The 200-year return period loss represents the long-term mean loss value due to direct damage caused by earthquake ground shaking in the residential, commercial and industrial building stock, considering structural and non-structural components and building contents, that is expected to be equalled or exceeded at least once every 200 years.
- The OpenQuake-engine, an open-source seismic hazard and risk calculation software supported by the GEM Foundation, was used to calculate the hazard and risk metrics presented in the country profiles.
- The maps and risk estimates displayed in this country profile, and the underlying databases are based on best available and publicly accessible datasets and models. The seismic hazard, exposure and vulnerability models employed in these calculations were provided by national institutions, or developed within the scope of regional programs or bilateral collaborations.
- The criterion used for the selection of the major earthquakes for display in the country profiles considered earthquakes causing the largest number of fatalities that occurred in the last 100 years (1918-2018). Fatalities due to tsunamis were excluded.